



CASHAL (SMOOTH)

Combines elements of historical interior door design with modern functionality, making it well-suited for many home styles and designs.

6'8" and 8'0" Sizes Available (7'0" height available with extended lead time.)
1'4" not available in 8'0".

1'0"	1'2"	1'3"	1'4"	1'6"	1'8"	1'10"	2'0"	2'2"	2'4"	2'6"	2'8"	2'10"	3'0"
				■	■		■	■	■	■	■	■	■

Durable, Long Lasting Performance

Made from molded high-density fiberboard, Cashal resists shrinking, swelling cracking and joint separation. Engineered wood designs outperforms wood doors while offering *superior value*. Available in standard 6'8" and 8'0" passage and bifold sizes with elegant smooth finish.

Haley offers a limited 1-year warranty for quality and craftsmanship on all residential molded panel doors.



Available in 6'8" and 8'0" passage and bifold sizes.

Most sizes can be specified for either hollow or solid core construction and with either fingerjoint or MDF stiles and rails.

Elegant smooth finish.

Available in 20, 45 and 60 minute ratings.

All doors are available primed with a low VOC primer; ready to paint.

Covered by a 1-year limited warranty for interior use.

GREEN BENEFITS

Haley molded door designs (facings) meet Phase 2 of the California Air Resources Board (CARB) Airborne Toxic Control Measure (ATCM) 93120.

Haley molded door designs contain **No Added Urea Formaldehyde (NAUF.)**

All hollow core Haley interior passage content doors contain a minimum of 25% pre-consumer recycled wood fiber content.

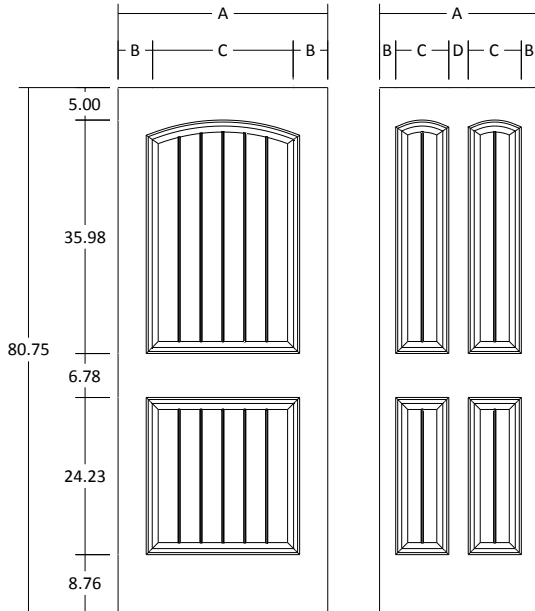
HALEY BROS., INC.

6291 Orangethorpe Ave
Buena Park, CA 90620

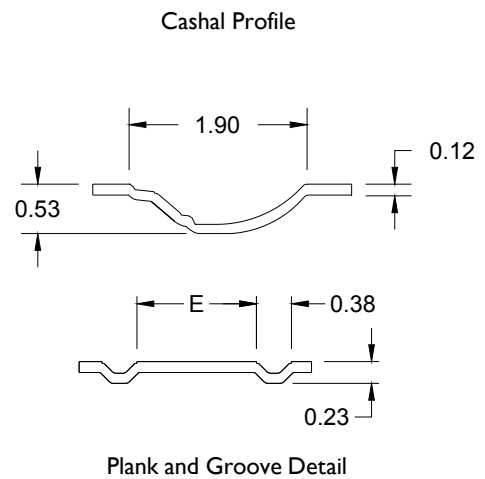
Ph: 800-854-5951
www.haleybros.com
info@haleybros.com



MOLDED DOOR- DIMENSIONAL SPECIFICATIONS



Cashal Smooth 6'8"



Cashal Smooth 6'8"

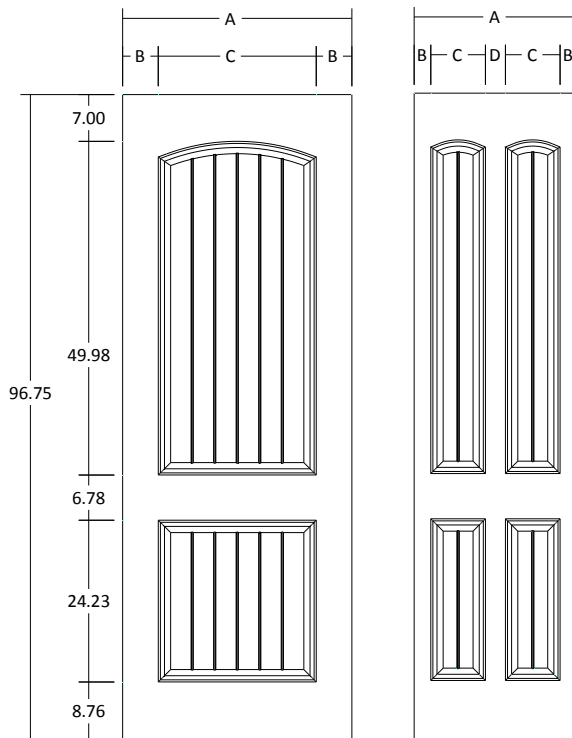
MOLDED DOOR DESIGN (DOOR FACING) SIZE

Overall length and width dimensions +/- 1/16"

Nominal	A	B	C	D	E	Number of Planks
36	36.375	5.34	25.69	--	3.32	6
34	34.375	5.34	23.69	--	2.99	6
32	32.375	4.34	23.69	--	2.99	6
30	30.375	4.34	21.69	--	3.26	5
28	28.375	4.34	19.69	--	2.86	5
26	26.375	5.34	15.69	--	2.68	4
24	24.375	4.34	15.69	--	2.68	4
20	20.375	4.21	11.96	--	2.46	3
18	18.375	3.21	11.96	--	2.46	3
16 U	--	--	--	--	--	--
15/18 U	36.375	5.94	10.00	4.50	2.90	2
16/16 B	--	--	--	--	--	--
15/15 B	--	--	--	--	--	--
14/14 B	--	--	--	--	--	--
12/12 B	24.375	2.49	8.20	3.00	2.01	2

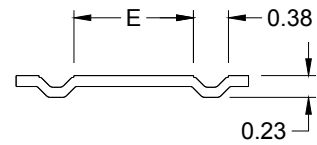
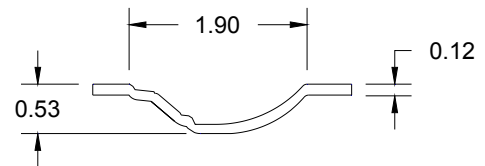


MOLDED DOOR- DIMENSIONAL SPECIFICATIONS



Cashal Smooth 8'0"

Cashal Profile



Plank and Groove Detail

Cashal Smooth 8'0"

MOLDED DOOR DESIGN (DOOR FACING) SIZE

Overall length and width dimensions +/- 1/16"

Nominal	A	B	C	D	E	Number of Planks
36	36.375	5.34	25.69	--	3.32	6
34	34.375	5.34	23.69	--	2.99	6
32	32.375	4.34	23.69	--	2.99	6
30	30.375	4.34	21.69	--	3.26	5
28	28.375	4.34	19.69	--	2.86	5
26	26.375	5.34	15.69	--	2.68	4
24	24.375	4.34	15.69	--	2.68	4
20	20.375	4.21	11.96	--	2.46	3
18	18.375	3.21	11.96	--	2.46	3
16 U	--	--	--	--	--	--
15/18 U	36.375	5.94	10.00	4.50	2.90	2
16/16 B	--	--	--	--	--	--
15/15 B	--	--	--	--	--	--
14/14 B	--	--	--	--	--	--
12/12 B	24.375	2.49	8.20	3.00	2.01	2